

Welcome!



269 E. Jeffrey Pl.



kw CAPITAL PARTNERS
KELLERWILLIAMS.

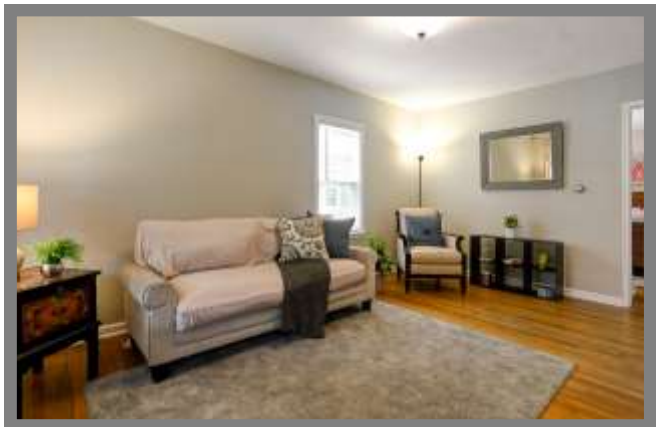
100 E. Wilson Bridge Rd. Worthington, OH 43085

614-888-6100

We know Columbus Real Estate!



269 E. Jeffrey Pl.



FEATURES

- One Story Home with Aluminum Exterior
- One Car Detached Garage with Opener
- Two Bedrooms
- One Full Bath
- Hardwood Floors
- Replacement Windows
- Kitchen Dining Area
- Finished Lower Level Recreation Room with Walk-in Closet
- Interior Painted - 2018
- Brick Paver Patio
- Washer & Dryer Convey with Home
- Sump Pump
- Radon Mitigation System - 2015
- Forced Air Gas Furnace
- Central Air Conditioning
- Year Built - 1946
- Square Feet - 1,036 (Includes finished lower level)
- Lot Size - 40' x 120'
- Taxes - \$3,399/yr.
- Parcel #010-085168-00
- Columbus Schools - www.ccsch.us/
- First American Home Warranty
- Disclosures available on MLS

Close proximity to many Clintonville amenities including, coffee shops, restaurants, OSU, COTA bus-line, Farmer's Market, Whetstone Park of Roses & Olentangy Bike Trail! Easy access to major travel roads.

The information in this brochure is deemed reliable, but not guaranteed.

ROOM DESCRIPTION

269 E. Jeffrey Pl.

Living Room 10'11" x 17'11"

Hardwood floor, painted woodwork, curtains & mini blinds on windows, overhead light

Kitchen

Tile floor, painted cabinets, laminate countertop, tile backsplash, exposed brick wall, double stainless steel sink, GE gas range, Kenmore refrigerator, portable Maytag dishwasher, built-in pantry cupboard

Dining Area

Tile floor, painted woodwork, door leading to patio & backyard

Bedroom # 1 8'11" x 10'11"

Hardwood floor, painted woodwork, mini blinds on window, overhead light

Bedroom #2 10'9" x 10'11"

Hardwood floor, painted woodwork, closet, accordion shades on windows, overhead light

Full Bath

Tile floor, pedestal sink, decorative mirror, shower with tile surround, shower curtain, commode



The information in this brochure is deemed reliable, but not guaranteed.

We know Columbus Real Estate!

ROOM DESCRIPTION

269 E. Jeffrey Pl.

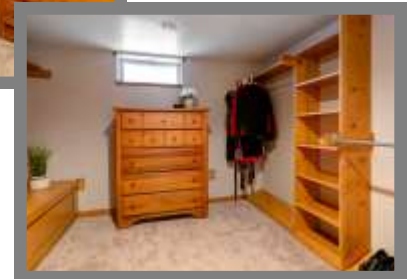
Lower Level

Recreation Room 10' x 19'9"

Laminate floor (2017), natural woodwork, recessed lighting, 9' x 10' walk-in closet with storage bench

Laundry Area

Washer & dryer convey with home, utility sink, mechanicals, work bench, storage area



School Info

www.ccsch.us/

High School

Whetstone High School

Middle School

Dominion Middle School

Elementary School

Indian Springs Elementary School



The information in this brochure is deemed reliable, but not guaranteed.

TheColumbusTeam.com
Facebook.com/TheColumbusTeam
Homes@TheColumbusteam.com

614-888-6100