

Welcome!



234 Pasadena Ave.

SUE LUSK-GLEICH &



THE
COLUMBUS
TEAM

kw CAPITAL PARTNERS
KELLERWILLIAMS.

100 E. Wilson Bridge Rd. Worthington, OH 43085

614-888-6100

We know Columbus Real Estate!



234 Pasadena Ave.

FEATURES

- One Story Home with Vinyl Exterior
- Located in Little Farms
- One Car Attached Garage
- Three Bedrooms
- Two Full Baths
- Master Suite
- Stainless Steel Appliances - 2018
- Wood Burning Fireplace
- Three Season Room
- Patio
- Screened Porch
- Deck
- Storage Shed
- Radon Mitigation - 2018
- Sump Pump - 2019
- Hot Water Tank - 2018
- Forced Air Gas Furnace
- Central Air
- Year Built - 1950
- Square Feet - 1,342
- Lot Size - 66' x 140'
- Parcel #025-010042-00
- Taxes - \$2,001/yr.
- Prairie Township Taxes - Southwestern Schools
- Southwestern Schools - www.swcsd.us/
- Choice Home Warranty



Located in Prairie Township and conveniently located near shopping & restaurants in the West Broad Street area. Minutes away from Prairie Oaks & Battelle Darby Creek Metro Park. Easy access to major travel roads!

The information in this brochure is deemed reliable, but not guaranteed.

TheColumbusTeam.com
Facebook.com/TheColumbusTeam
Homes@TheColumbusteam.com

614-888-6100

ROOM DESCRIPTION

234 Pasadena Ave.

Living Room **18'4" x 20'**

Laminate floor, wood burning fireplace with painted brick surround, painted mantle, curtains on windows, open to dining area, coat closet

Dining Area

Laminate floor, track lighting, open living room

Three Season Room

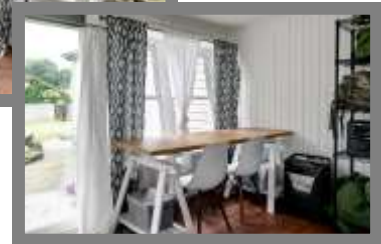
Laminate floor, sliding glass door leading to backyard, curtains on windows

Kitchen

Laminate floor, natural wood cabinets, laminate countertop, double stainless steel sink with disposal, Frigidaire stainless steel flat cooktop range (2018), Frigidaire stainless steel side-by-side refrigerator with dispenser (2018), Frigidaire stainless steel dishwasher (2018), fluorescent lighting

Laundry Room

Vinyl floor, washer/dryer hook-up, upper storage cabinets, door leading to garage



The information in this brochure is deemed reliable, but not guaranteed.

We know Columbus Real Estate!

ROOM DESCRIPTION

234 Pasadena Ave.

Master Bedroom 17' x 16'10"

Carpet floor, painted woodwork, ceiling fan/light, closet, door leading to patio

Master Bath

Vinyl floor, vanity/sink, decorative mirror, light fixture above vanity, walk-in shower with sliding glass door, commode

Bedroom #1 9'1" x 13'3"

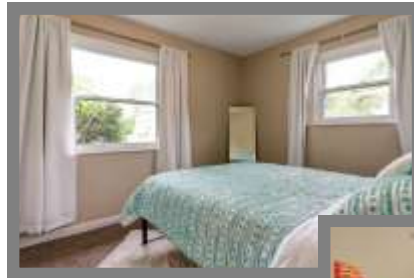
Carpet floor, painted woodwork, closet, overhead light, curtains on windows

Bedroom #2 7'11" x 11'11"

Carpet floor, painted woodwork, closet, overhead light, curtains on windows

Full Bath

Vinyl floor, vanity/sink, decorative mirror, light fixture above vanity, bathtub with shower surround, shower curtain



The information in this brochure is deemed reliable, but not guaranteed.