

Welcome!



61 E. Beaumont Rd.



kw CAPITAL PARTNERS
KELLERWILLIAMS.

100 E. Wilson Bridge Rd. Worthington, OH 43085

614-888-6100

We know Columbus Real Estate!

61 E. Beaumont Rd.



DETAILS

- Two Story Home with Wood Exterior
- Four Car Tandem Detached Garage
- Three Bedrooms
- One Full Bath (Additional bath in basement)
- Hardwood Floors
- Decorative Fireplace
- Kitchen Dining Area
- Office/Den on Upper Level
- Enclosed Porch
- Walk-up Attic
- Roof - 2012
- Hot Water Tank - 2016
- Forced Air Gas Furnace - 2013
- Central Air Conditioning - 2002
- Year Built - 1918
- Square Feet - 1,684
- Lot Size - 45' x 192'
- Taxes - \$5,189/yr.
- Parcel #010-033946-00
- Columbus Schools - www.ccsch.us/
- ABC Home Safe & Gas Line Warranty
- Disclosures available on MLS



Close proximity to many Clintonville amenities including, coffee shops, restaurants, OSU, COTA bus-line, Farmer's Market, Whetstone Park of Roses & Olentangy Bike Trail! Easy access to major travel roads.

The information in this brochure is deemed reliable, but not guaranteed.

TheColumbusTeam.com
Facebook.com/TheColumbusTeam
Homes@TheColumbusteam.com

614-888-6100

ROOM DESCRIPTION

61 E. Beaumont Rd.

Living Room **14' x 17'9"**

Hardwood floor, painted woodwork, decorative fireplace with tile surround & hearth, overhead light fixture, roman shades, coat closet

Dining Room **13'4" x 14'5"**

Hardwood floor, painted woodwork, decorative light fixture, sliding glass doors leading to enclosed porch

Kitchen

Hardwood floor, painted cabinets, laminate countertop, stainless steel double sink with disposal, Whirlpool stainless steel flat cooktop range, Whirlpool refrigerator, Maytag dishwasher, dining area, door leading to enclosed porch & backyard

Enclosed Porch - 11'7" x 11'5"



The information in this brochure is deemed reliable, but not guaranteed.

We know Columbus Real Estate!

ROOM DESCRIPTION

61 E. Beaumont Rd.

Upper Level

Bedroom **10'11" x 12'3"**
Hardwood floor, painted woodwork, closet, curtains on windows

Bedroom **10'7" x 14'**
Hardwood floor, painted woodwork, closet, curtains on windows

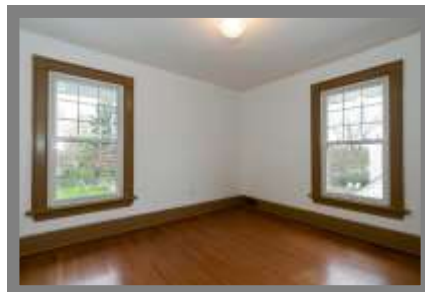
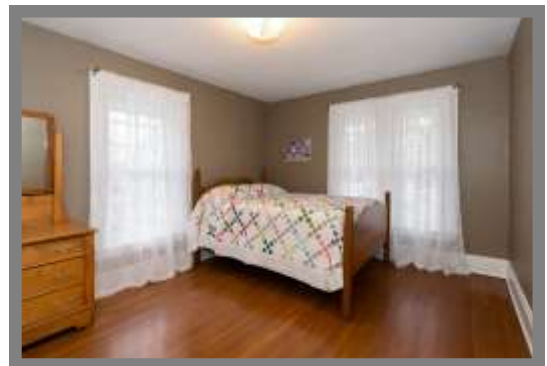
Bedroom **10'9" x 11'9"**
Hardwood floor, painted woodwork, (2) closets

Full Bath
Vinyl floor, vanity/sink, built-in medicine cabinet, bathtub with shower surround, shower curtain, built-in linen cupboard, commode

Den/Office **8' x 11'**
Carpet floor, painted woodwork

Lower Level
Washer/Dryer hook-up, utility sink, mechanicals, storage

Full Bath
Vanity/sink, shower, commode



School Info www.ccsqh.us/

High School
Whetstone High School

Middle School
Dominion Middle School

Elementary School
Indian Springs Elementary School



The information in this brochure is deemed reliable, but not guaranteed.

TheColumbusTeam.com
Facebook.com/TheColumbusTeam
Homes@TheColumbusteam.com

614-888-6100