

Welcome!



137 E. Pacemont Rd.

SUE LUSK-GLEICH &



THE
COLUMBUS
TEAM

kw CAPITAL PARTNERS
KELLERWILLIAMS.

100 E. Wilson Bridge Rd. Worthington, OH 43085

614-888-6100

We know Columbus Real Estate!

137 E. Pacemont Rd.



DETAILS

- Two Story Home with Wood Siding
- Three Bedrooms + Bonus Office/Nursery Space
- Two Full Baths
- Hardwood Floors
- First Floor Study/Den
- First Floor Family Room with Dining Space & Wood Burning Stove
- Formal Living & Dining Room
- Gas Log Fireplace in Living Room
- Finished Walk-up Attic
- Exterior Painted - 2018
- Gutter Guards - 2013
- Brick Paver Patio
- Cedar Privacy Fence - 2013
- Storage Shed
- Glass Block Windows in Basement
- Everdry Waterproofing in Basement with Warranty
- 40 Gallon Hot Water Tank - 2019
- Forced Air Gas Furnace
- Central Air Conditioning
- Year Built - 1923
- Square Feet - 2,456
- Lot Size - 45' x 111'
- Taxes - \$6,528/yr.
- Parcel #010-014998-00
- Columbus Schools - www.ccsch.us/
- Choice Home Warranty



Close proximity to many Clintonville amenities including, coffee shops, restaurants, OSU, COTA bus-line, Farmer's Market, Whetstone Park of Roses & Olentangy Bike Trail! Easy access to major travel roads.

The information in this brochure is deemed reliable, but not guaranteed.

TheColumbusTeam.com
Facebook.com/TheColumbusTeam
Homes@TheColumbusteam.com

614-888-6100

ROOM DESCRIPTION

137 E. Pacemont Rd.

Living Room **12'5" x 21'9"**

Wood laminate floor, painted woodwork, crown molding, gas fireplace insert, marble fireplace surround & hearth, built-in bookshelves, curtains on window

Study/Office **7'8" x 13'2"**

Carpet floor (2019), painted woodwork, crown molding, built-in bookshelves, ceiling fan/light, access to full bath

Dining Room **12'4" x 14'3"**

Hardwood floor, painted woodwork, chair rail & crown molding, chandelier, stained glass window, open to family room

Kitchen

Laminate floor, hickory wood cabinets, Corian countertop & sink, Whirlpool stainless steel gas range, Whirlpool stainless steel built-in microwave, Whirlpool stainless steel side-by-side refrigerator, Kenmore stainless steel dishwasher, recessed lighting, open to dining area & family room



The information in this brochure is deemed reliable, but not guaranteed.

We know Columbus Real Estate!

ROOM DESCRIPTION

137 E. Pacemont Rd.

Casual Dining Area

Laminate floor, decorative light fixture, door leading to patio & backyard

Family Room 15'2" x 20'

Carpet floor, natural woodwork, natural wood beams, wood burning stove, ceiling fan/light

Full Bath

Laminate floor, pedestal sink, walk-in shower with glass door, commode

Upper Level

Bedroom #1 8'10" x 12'4"

Hardwood floor, painted woodwork, closet, ceiling fan/light, plantation blind on window, access to walk-up attic

Bedroom #2 12'4" x 12'7"

Hardwood floor, painted woodwork, double cedar closet, ceiling fan/light, plantation blind on windows



The information in this brochure is deemed reliable, but not guaranteed.

ROOM DESCRIPTION

137 E. Pacemont Rd.

Office/Nursery 9' x 13'5"

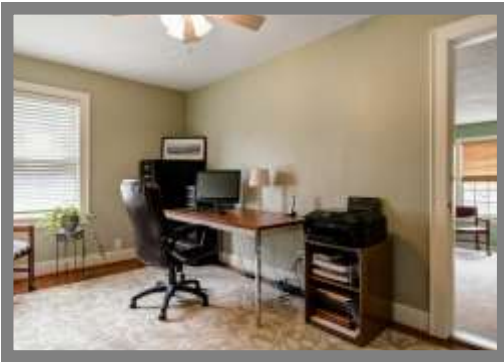
Hardwood floor, painted woodwork, closet, ceiling fan/light, plantation blind on window, access to master bedroom

Master Bedroom 15'2" x 16'5"

Carpet floor, painted woodwork, natural wood blinds on windows, walk-in closet with access to full bath

Full Bath

Laminate floor, pedestal sink, painted beadboard wainscoting, decorative mirror, (2) light fixtures, clawfoot tub with Chicago shower curtain, commode



The information in this brochure is deemed reliable, but not guaranteed.

We know Columbus Real Estate!

ROOM DESCRIPTION

137 E. Pacemont Rd.

Walk-up Attic **16'10" x 20'3"**
Carpet floor, painted woodwork, open in-wall storage

Lower Level

Washer/Dryer hook-up, glass block windows, mechanicals, storage



School Info

www.csoh.us/

High School

Whetstone High School

Middle School

Dominion Middle School

Elementary School

Clinton Elementary School

The information in this brochure is deemed reliable, but not guaranteed.

TheColumbusTeam.com
Facebook.com/TheColumbusTeam
Homes@TheColumbusteam.com

614-888-6100