

Welcome!



105 E. Weisheimer Rd.

SUE LUSK-GLEICH &



THE
COLUMBUS
TEAM

kw CAPITAL PARTNERS
KELLERWILLIAMS.

100 E. Wilson Bridge Rd. Worthington, OH 43085

614-888-6100

We know Columbus Real Estate!

105 E. Weisheimer Rd.



DETAILS

- Cape Cod Style Home with Brick Exterior
- One Car Detached Garage
- Three Bedrooms
- One Full Bath
- Hardwood Floors
- Built-ins
- Decorative Fireplace
- Kitchen Eating Space
- Screened Porch
- Replacement Windows in Upper Level
- Glass Block Windows in Basement
- Paver Patio
- Invisible Fence - 2019
- Forced Air Gas Furnace
- Central Air Conditioning
- Year Built - 1948
- Square Feet - 1,183
- Lot Size - 50' x 128'
- Taxes - \$3,829/yr.
- Parcel #010-085555-00
- Columbus Schools - www.ccsokh.us/
- ABC Home Safe & Gas Line Warranty
- Disclosures available on MLS



Close proximity to many Clintonville amenities including, coffee shops, restaurants, OSU, COTA bus-line, Farmer's Market, Whetstone Park of Roses & Olentangy Bike Trail! Easy access to major travel roads.

The information in this brochure is deemed reliable, but not guaranteed.

TheColumbusTeam.com
Facebook.com/TheColumbusTeam
Homes@TheColumbusteam.com

614-888-6100

ROOM DESCRIPTION

105 E. Weisheimer Rd.

Living Room **11'4" x 15'10"**

Hardwood floor, painted woodwork, wood burning fireplace with painted brick surround, tile hearth, painted mantle, built-in bookshelf, curtains on window

Kitchen

Laminate floor, white cabinets, laminate countertop, double stainless steel sink with disposal, Whirlpool gas range, GE built-in microwave above range, GE refrigerator, Kenmore dishwasher, under cabinet lighting, recessed lighting, door leading to screened porch & backyard

Kitchen Dining Space

Laminate floor, decorative light fixture, built-in shelving, roman shade on window

Master Bedroom **10'2" x 13'4"**

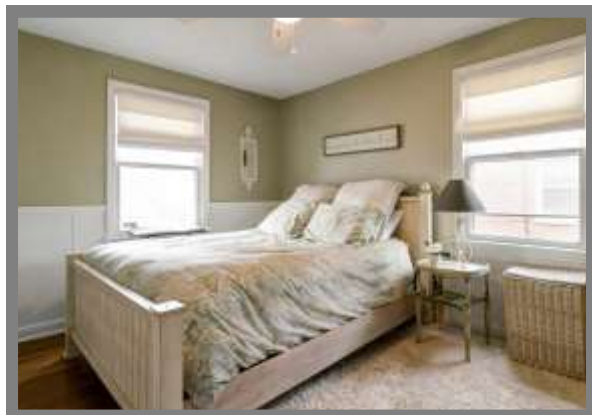
Hardwood floor, painted woodwork, painted wainscoting, ceiling fan/light, closet, roman shades on windows

Full Bath

Laminate floor, vanity with sink, mirror/medicine cabinet, bathtub with shower surround, shower curtain, linen storage shelves, commode

Hall

Hardwood floor, storage closet, overhead light



The information in this brochure is deemed reliable, but not guaranteed.

We know Columbus Real Estate!

ROOM DESCRIPTION

105 E. Weisheimer Rd.

Bedroom #2 9' x 12'10"

Hardwood floor, painted woodwork, painted chair rail, ceiling fan/light, closet, mini blinds & curtains on windows

Upper Level

Bedroom #3 15'4" x 14'7"

Carpet floor, painted woodwork, sloped ceiling, replacement windows, (2) closets, built-in wall storage, accordion shades on windows

Lower Level

Washer/Dryer hook-up, glass block windows, mechanicals, storage, storage room



School Info

www.csoh.us/

High School

Whetstone High School

Middle School

Dominion Middle School

Elementary School

Indian Springs Elementary School



The information in this brochure is deemed reliable, but not guaranteed.

TheColumbusTeam.com
[Facebook.com/TheColumbusTeam](https://www.facebook.com/TheColumbusTeam)
Homes@TheColumbusteam.com

614-888-6100