

# Welcome!



## 162 W. Jeffrey Pl.

SUE LUSK-GLEICH &



THE  
COLUMBUS  
TEAM

**kw** CAPITAL PARTNERS  
KELLERWILLIAMS.

100 E. Wilson Bridge Rd. Worthington, OH 43085

**614-888-6100**

**We know Columbus Real Estate!**

162 W. Jeffrey Pl.



## DETAILS

- Three Story Center Hall Colonial with Stone & Vinyl Exterior
- Two Car Detached Garage with Loft Storage & Dual Garage Doors on North & South Side
- Covered Carport
- Five Bedrooms
- Three Full Baths & One Half Bath
- Finished Third Floor with Full Bath
- Hardwood Floors Throughout
- Wood Burning Fireplace
- Formal Dining Room
- Sunroom
- Updated Kitchen
- Kitchen Eating Area
- Slate Roof
- Fenced Yard
- Large Deck With Built-in Benches & Storage
- Photo Sensor Lights on Back of Garage & Home
- Irrigation System
- Security System
- Professionally Landscaped with Lighting
- Updated Covered Front Porch - 2017
- Forced Air Gas Furnace
- Central Air Conditioning
- Year Built - 1924
- Square Feet - 2,575
- Lot Size - 106' x 117'
- Taxes - \$10,247/yr.
- Parcel #010-083902-00
- Voluntary HOA Dues - \$75/yr.
- Columbus Schools - [www.ccsch.us/](http://www.ccsch.us/)
- Home Warranty



***Close proximity to many Clintonville amenities including, coffee shops, restaurants, OSU, COTA bus-line, Farmer's Market, Whetstone Park of Roses & Olentangy Bike Trail! Easy access to major travel roads.***

The information in this brochure is deemed reliable, but not guaranteed.

**TheColumbusTeam.com**  
**Facebook.com/TheColumbusTeam**  
**Homes@TheColumbusteam.com**

**614-888-6100**

## ROOM DESCRIPTION

162 W. Jeffrey Pl.

### Foyer

Hardwood floor, painted woodwork, grand staircase, overhead light, coat closet

### Living Room **13'4" x 23'9"**

Hardwood floor, painted woodwork, crown molding, woodburning fireplace with stone surround, tile hearth, built-in bookcases with glass doors flanking fireplace, (2) doorways leading to sunroom

### Sunroom **Approx. 8' x 20'**

Tile floors, painted woodwork, stone feature wall, (2) bay windows, (2) sliding glass door leading to deck & backyard, updated windows (2011)

### Dining Room **12'11" x 13'10"**

Hardwood floor, painted woodwork, crown molding, chair rail, original chandelier, display shelves, door leading to carport

### Kitchen

Hardwood floor, white cabinets, Corian countertop, double sink, tile backsplash, Jenn-Air gas range with double oven, built-in pot rack above range, Kitchen Aid dishwasher (2015), display shelves, eating space, laundry chute, track lighting

### Hall

Hardwood floor, automated garage access pad, door leading to deck & backyard, open stairs leading to lower level

### Half Bath

Hardwood floor, antique wood vanity with porcelain sink, overhead light, commode



The information in this brochure is deemed reliable, but not guaranteed.

**We know Columbus Real Estate!**

## ROOM DESCRIPTION

162 W. Jeffrey Pl.

**Walk-in Pantry Storage**      **3'4" x 6'10"**  
Hardwood floor, closet, storage

**Storage Room**      **4' x 5'8"**  
Hardwood floor, storage

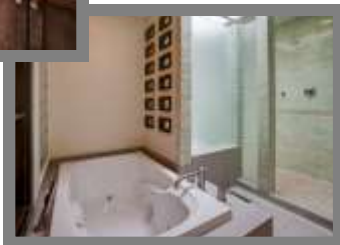
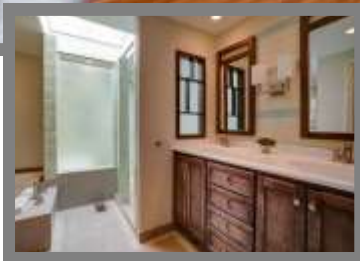
### Upper Level

**Master Bedroom**      **11'10" x 14'7"**  
Hardwood floor, painted woodwork, recessed lighting

**Master Bath**  
Stone & glass tile floor, vanity with double sinks, decorative mirrors, decorative light fixtures, L-shaped walk-in shower with tile & glass surround, triple shower heads, bench seating, skylight, frosted glass door, stand alone Jacuzzi bathtub, recessed lighting, private commode room, walk-in closet with custom built-in shelving

**Bedroom #2**      **9'7" x 14'6"**  
Hardwood floor, painted woodwork, chair rail, closet, overhead light

**Bedroom #3**      **12'6" x 14'6"**  
Hardwood floor, painted woodwork, closet with storage system & sliding door, recessed lighting



The information in this brochure is deemed reliable, but not guaranteed.

**TheColumbusTeam.com**  
**Facebook.com/TheColumbusTeam**  
**Homes@TheColumbusteam.com**

**614-888-6100**

# ROOM DESCRIPTION

162 W. Jeffry Pl.

## **Bedroom #4** **12'10" x 14'7"**

Hardwood floor, painted woodwork, decorative corner fireplace, closet, overhead light

## **Full Bath**

Tile floor, vanity with tile countertop, mirror/medicine cabinet, bathtub with tile surround

## **Hall**

Hardwood floor, built-in linen storage cabinets with drawers, laundry chute, overhead lighting

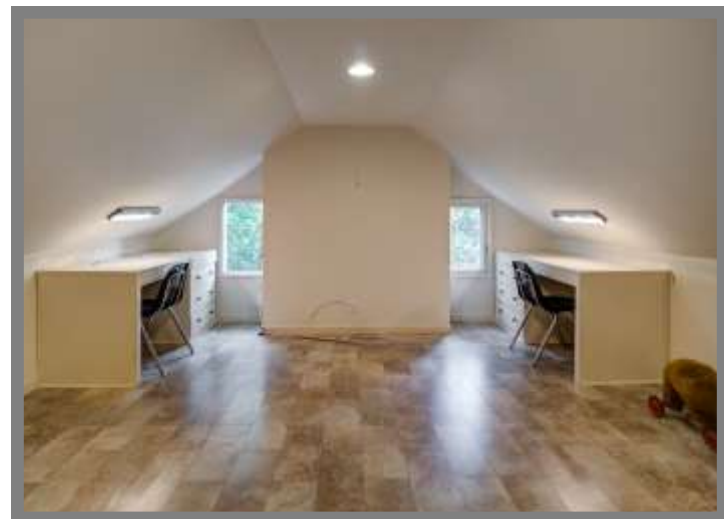
## **Third Floor**

## **Bedroom/Office** **13'11" x 26'4"**

Laminate floor, painted woodwork, sloped ceiling, (2) built-in desks, wall storage, walk-in closet

## **Full Bath**

Laminate floor, vanity with Corian countertop & double sinks, clawfoot bathtub, commode, recessed lighting



The information in this brochure is deemed reliable, but not guaranteed.

**We know Columbus Real Estate!**

# ROOM DESCRIPTION

162 W. Jeffrey Pl.

## Lower Level

### **Storage Area**

Storage, closet, commode room

### **Work Room**                **8'5" x 11'7"**

Wood panel walls, built-in desk with cabinets & shelving, fluorescent lighting

### **Laundry Area**

Washer/Dryer hook-up, double utility sink, mechanicals

### **Work Area**

Work bench



## **School Info**

[www.ccsch.us/](http://www.ccsch.us/)

### High School

Whetstone High School

### Middle School

Dominion Middle School

### Elementary School

Indian Springs Elementary School

The information in this brochure is deemed reliable, but not guaranteed.

[TheColumbusTeam.com](http://TheColumbusTeam.com)  
[Facebook.com/TheColumbusTeam](https://Facebook.com/TheColumbusTeam)  
[Homes@TheColumbusteam.com](mailto:Homes@TheColumbusteam.com)

614-888-6100