

Welcome!



8844 Belisle Ct.



kw CAPITAL PARTNERS
KELLERWILLIAMS.

100 E. Wilson Bridge Rd. Worthington, OH 43085

614-888-6100

We know Columbus Real Estate!

8844 Belisle Ct.



FEATURES

- One Story Ranch Style Home with Stucco & Stone Exterior
- Located on a Wooded Lot in Muirfield Village
- Open Concept
- Two+ Car Attached Garage
- Three Bedrooms
- Two Full & One Half Bath
- Hardwood Floors Throughout
- Vaulted Ceilings
- First Floor Owner's Suite
- Updated Owner's Bath - 2017
- First Floor Office/Den with Adjacent Half Bath
- 4-season Florida Room
- Finished Lower Level Recreation Room - Approx. 1,500 sq.ft.)
- Replacement Windows - 2004
- Custom Blinds & Shades Throughout Home - 2015 & 2017
- Concrete Porch & Patio - 2012
- Interior Painted - 2017
- Exterior Painted - 2013
- Leaf Guard Gutters - 2011
- Roof - 2004
- Sump Pump - 2018
- Hot Water Tank - 2017
- Forced Air Gas Furnace - 2014
- Central Air - 2010
- Year Built - 1978
- Square Feet - 3,942 (Includes finished lower level)
- Lot Size - 139' x 190'
- Taxes - \$6,954/yr.
- Parcel #600-344-05-053-000
- HOA Fees - \$679/yr.
- Dublin Schools - www.dublinschools.net
- Choice Home Warranty



Conveniently located in Muirfield Village featuring walking/biking paths & close proximity to Muirfield Village Golf Club as well as the Columbus Zoo & Aquarium. Minutes away from Historic Downtown Dublin with restaurants, entertainment & shopping. Easy access to major travel roads!

The information in this brochure is deemed reliable, but not guaranteed.

TheColumbusTeam.com
Facebook.com/TheColumbusTeam
Homes@TheColumbusteam.com

614-888-6100

ROOM DESCRIPTION

8844 Belisle Ct.

Foyer

Hardwood floor, natural woodwork, coat closet, decorative light fixture

Great Room 25'6" x 27'4"

Hardwood floor, natural woodwork, vaulted ceiling, floor to ceiling 2-sided gas log fireplace with brick hearth & surround, dining space, french doors leading to patio & backyard, (2) ceiling fans/lights, custom shades & curtains on windows, door leading to sunroom, open to kitchen

Dining Room 11'7" x 13'5"

Hardwood floor, natural woodwork, vaulted ceiling, floor to ceiling 2-sided fireplace, decorative light fixture, custom shades & curtains on window

Kitchen

Hardwood floor, vaulted ceiling, natural wood cabinets, granite counters, undermount stainless steel sink with disposal, Frigidaire stainless steel flat cooktop range, Whirlpool stainless steel french door refrigerator with dispenser, Whirlpool stainless steel dishwasher, breakfast bar with seating, (2) pendant lights above breakfast bar, recessed lighting, open to great room



The information in this brochure is deemed reliable, but not guaranteed.

We know Columbus Real Estate!

ROOM DESCRIPTION

8844 Belisle Ct.

Den/Office 8'10" x 11'11"

Hardwood floor, natural woodwork, closet, overhead light, custom shades & curtains on windows

Half Bath

Hardwood floor, corner vanity with sink, corner mirror/medicine cabinet, custome & valance on window, commode

4 - Season Florida Room

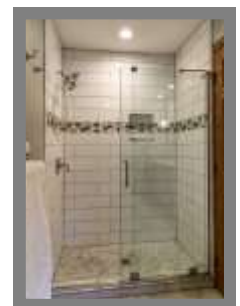
Tile floor, ceiling fan/light, Fujitsu air conditioning/heating unit, sliding glass door leading to patio & backyard, custom rolling shades on windows

Master Bedroom 12' x 15'7"

Hardwood floor, natural woodwork, vaulted ceiling, bay window, ceiling fan/light, walk-in closet with storage system, custom shades & curtains on bay windows

Master Bath (Updated 2017)

Marble tile floor, vanity with double sinks, granite countertop, undermount sinks, (2) designer mirrors, (2) light fixtures, walk-in shower with subway tile surround w/glass accent tile, glass sliding door, separate commode room, linen closet, recessed lighting



The information in this brochure is deemed reliable, but not guaranteed.

ROOM DESCRIPTION

8844 Belisle Ct.

Bedroom #2 11'4" x 16'5"

Carpet floor, natural woodwork, vaulted ceiling, ceiling fan/light, walk-in closet with storage system, custom shades & valance on window

Bedroom #3 13'5" x 15'5"

Carpet floor, natural woodwork, vaulted ceiling, ceiling fan/light, closet with storage system, custom shades & valance on window

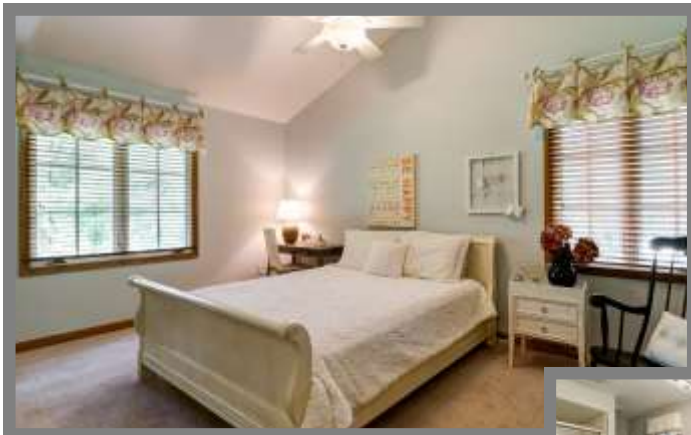
Full Bath

Tile floor, vanity with double sinks, mirror, (2) light fixtures, bathtub with shower surround & sliding glass door, linen storage closet

Lower Level

Recreation Room 18'9" x 26'6"

Carpet floor (2018), painted woodwork, glass block windows, recessed lighting, closet with sump pump



The information in this brochure is deemed reliable, but not guaranteed.

We know Columbus Real Estate!

ROOM DESCRIPTION

8844 Belisle Ct.

Storage/Mechanical Room

Mechanicals, storage

Recreation Area - Approx. 740 Sq. ft

Carpet floor (2018), painted woodwork, glass block windows, recessed lighting

Laundry Room

Vinyl floor, washer/dryer hook-up (washer & dryer convey with home), upper & lower storage cabinets with folding counter, double sink, built-in work desk w/upper & lower storage cabinets, fluorescent lighting, storage room



School Info

www.dublinschools.net

High School

Dublin Jerome High School

Middle School

Willard Grizzell Middle School

Elementary School

Eli Pinney Elementary School

The information in this brochure is deemed reliable, but not guaranteed.

We know Columbus Real Estate!