

Welcome!



900 Tamara Dr. N.

kw CAPITAL PARTNERS
KELLERWILLIAMS.

100 E. Wilson Bridge Rd.
Worthington, OH 43085
614-888-6100

your
**REAL
ESTATE**

THE COLUMBUS TEAM

www.TheColumbusTeam.com
www.facebook.com/TheColumbusTeam
www.twitter.com/TheColumbusTeam

homes@TheColumbusTeam.com

We know Columbus Real Estate!



900 Tamara Dr. N.



DETAILS

- Two Story Single Family Shared Wall Home with Stucco Exterior (End Unit)
- Wooded Ravine Lot
- Two Car Detached Garage with Opener
- Three Bedrooms
- One Full & One Half Baths
- Kitchen Eating Space
- Deck on Lower Level
- Concrete Patio
- Fenced Yard
- Sump Pump
- Washer/Dryer Convey with Home
- Forced Air Gas Furnace
- Central Air Conditioning
- Year Built - 1983
- Square Feet - 1,844 (Includes finished lower level)
- No HOA Fees - (Fee Simple)
- Taxes - \$2,087/yr.
- Parcel #025-006625-00
- Gahanna Jefferson Schools - ww.gahannaschools.org
- ABC Home Safe & Gas Line Warranty
- Disclosures available on MLS



Conveniently located in the heart of Gahanna with close proximity to schools, parks, restaurants, shopping, major travel roads & Creekside Gahanna!

The information in this brochure is deemed reliable, but not guaranteed.

We know Columbus Real Estate!

ROOM DESCRIPTION

900 Tamara Dr. N.

Foyer

Vinyl floor, coat closet, overhead light

Living Room 13'2" x 15'2"

Carpet floor, natural woodwork, ceiling fan, window overlooking ravine, curtains on window, open to dining room

Dining Room 8'5" x 10'3"

Carpet floor, natural woodwork, chandelier, window overlooking ravine, curtains on window, open to living room

Kitchen

Vinyl floor, natural wood cabinets, laminate countertop, Caloric electric range, Norge refrigerator, fluorescent lighting, open to eating area

Eating Area 9'5" x 10'

Vinyl floor, overhead light, window overlooking front patio, mini blinds & curtain on window, open to kitchen

Half Bath

Vinyl floor, vanity with porcelain sink, mirror, light fixture above vanity, commode

Upper Level

Master Bedroom 12' x 17'9"

Carpet floor, natural woodwork, closet, ceiling fan/light, curtains on window, access to full bath

Full Bath

Vinyl floor, natural wood vanity with porcelain sink, mirror, mirror/medicine cabinet, light fixture above vanity, bathtub with tile surround, shower curtain



The information in this brochure is deemed reliable, but not guaranteed.

ROOM DESCRIPTION

900 Tamara Dr. N.

Bedroom **11'11" x 11'3"**

Carpet floor, natural woodwork, closet, ceiling fan/light, curtain on window

Bedroom **9'3" x 11'1"**

Carpet floor, natural woodwork, closet, overhead light, valance on window

Hall

Linen closet, overhead light

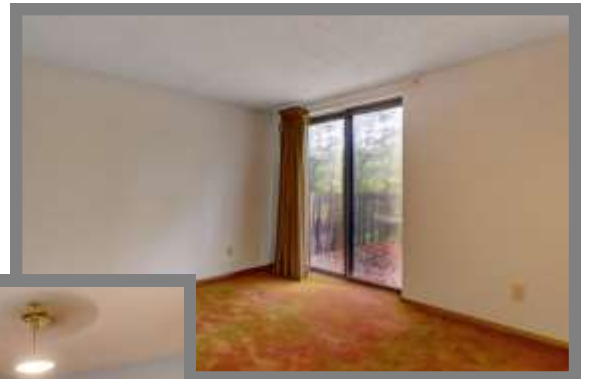
Lower Level

Recreation Room **11' x 21'**

Carpet floor, natural woodwork, ceiling fan/light, sliding glass door leading to deck, curtains on sliding glass door

Laundry/Storage Room

Vinyl floor, Washer/Dryer hook-up (Whirlpool W/D convey with home), mechanicals, sump pump, storage



School Info

www.gahannaschools.org

High School

Gahanna Lincoln High School

Middle School

Gahanna Middle School South

Elementary School

Lincoln Elementary School



The information in this brochure is deemed reliable, but not guaranteed.

We know Columbus Real Estate!