

Welcome!



411 Lemery Dr.

kw CAPITAL PARTNERS
KELLERWILLIAMS.

100 E. Wilson Bridge Rd.
Worthington, OH 43085
614-888-6100

your
**REAL
ESTATE**

THE COLUMBUS TEAM

www.TheColumbusTeam.com
www.facebook.com/TheColumbusTeam
www.twitter.com/TheColumbusTeam

homes@TheColumbusTeam.com

We know Columbus Real Estate!

411 Lemery Dr.



DETAILS

- Two Story Home with Vinyl Exterior - Harrison Model
- Located in Lakes of Taylor Station Waterford Park
- Two Car Attached Garage
- Four Bedrooms
- Three Full & One Half Baths
- Open Concept
- Two Story Great Room
- Gas Log Fireplace
- First Floor Owner's Suite
- Office/Den
- First Floor Laundry
- Loft
- Finished Lower Level Recreation Room with Wet Bar
- Lower Level Play Room
- Lower Level Bedroom with Egress Window
- Lower Level Full Bath
- Sump Pump
- Forced Air Gas Furnace
- Central Air
- Year Built - 2013
- Square Feet - 3,827 (Includes finished lower level)
- HOA Fee - \$53/month (Includes maintenance of common area)
- Taxes - \$3,698/yr.
- Parcel #520-291404-00
- Columbus Taxes/Gahanna Jefferson Schools
- Gahanna Jefferson Schools - www.gahannaschools.org
- ABC Home Safe & Gas Line Warranty
- Disclosures Available on MLS

Conveniently located near shopping & restaurants in the Reynoldsburg area. Community park with pond, pavilion, water fountain & walking/bike path. Easy access to major travel roads!

The information in this brochure is deemed reliable, but not guaranteed.



We know Columbus Real Estate!

ROOM DESCRIPTION

411 Lemery Dr.

Foyer

Hardwood floor, painted woodwork, coat closet, overhead light

Den 9'11" x 9'11"

Carpet floor, painted woodwork, plantation blind on window

Half Bath

Hardwood floor, pedestal sink, mirror, light fixture above sink, commode

Laundry Room

Vinyl floor, washer/dryer hook-up, shelving

Two Story Great Room

Carpet floor, painted woodwork, gas log fireplace with ceramic tile surround & hearth, painted mantle, wall of windows, plantation blinds on lower windows, open to dining area & kitchen

Kitchen

Vinyl floor, natural wood cabinets, laminate countertop, double stainless steel sink with disposal, Maytag stainless steel range with convection oven, Maytag stainless steel built-in microwave above stove, Whirlpool stainless steel French door refrigerator, Maytag stainless steel dishwasher, pantry closet, recessed lighting, overhead light

Dining Area

Vinyl floor, painted woodwork, hanging light fixture, sliding glass door leading to backyard, vertical blinds on sliding glass door, open to kitchen & great room



The information in this brochure is deemed reliable, but not guaranteed.

ROOM DESCRIPTION

411 Lemery Dr.

Master Bedroom **12'11" x 14'11"**

Carpet floor, painted woodwork, vaulted ceiling, ceiling fan/light, plant shelf, plantation blinds on windows

Master Bath

Ceramic tile floor, vanity with double sinks, mirror, light fixtures above vanity, garden soaking bathtub with window above, stand alone shower with ceramic tile surround & glass door, commode, walk-in closet

Upper Level

Loft **9'3" x 11'4"**

Carpet, painted woodwork, plantation blind on window, overhead light

Bedroom **10'3" x 14'11"**

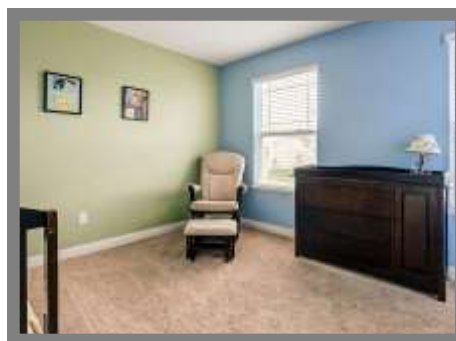
Carpet floor, painted woodwork, ceiling fan/light, 9' x 10' walk-in closet, attic access

Bedroom **9'11" x 11'**

Carpet floor, painted woodwork, ceiling fan/light, plantation blind on window

Full Bath

Vinyl floor, vanity/sink, mirror, light fixture above vanity, bathtub/shower, shower curtain, commode



The information in this brochure is deemed reliable, but not guaranteed.

We know Columbus Real Estate!

ROOM DESCRIPTION

411 Lemery Dr.

Finished Lower Level - 2017

Recreation Room 12'7" x 24'2"

Carpet floor, painted woodwork, media cove with bookshelves on both sides, storage closet, wet bar with lower cabinets & countertop, single stainless steel sink, recessed lighting

Play Room 9'10" x 13'2"

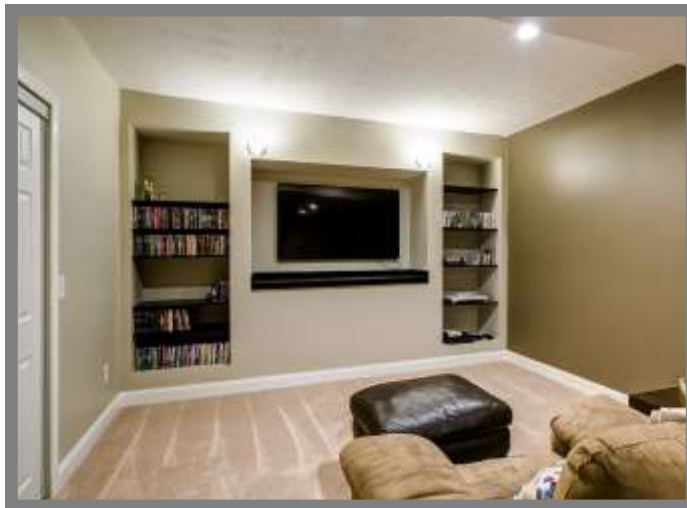
Carpet floor, painted woodwork, glass block windows, storage closet, storage room

Bedroom 9'11" x 15'10"

Carpet floor, painted woodwork, egress window, closet

Full Bath

Vinyl floor, vanity with sink, decorative mirror, light fixture above vanity, stand alone shower with glass sliding door, linen closet, commode, overhead light



The information in this brochure is deemed reliable, but not guaranteed.

EXTERIOR PICTURES

411 Lemery Dr.

Survey



School Info

www.gahannaschools.org

High School

Gahanna Lincoln High School

Middle School

Gahanna Middle School

Elementary School

Goshen Lane Elementary School

Private Schools

www.privateschoolreview.com



The information in this brochure is deemed reliable, but not guaranteed.

We know Columbus Real Estate!