

TheColumbusTeam

WELCOME!



243 W. Schreyer Pl.



Sue Lusk-Gleich, Mary Allen, Patrick Florence, Erin Ogden, Edie James and Jeanne O'Keefe

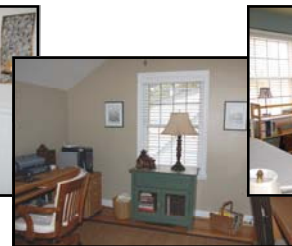
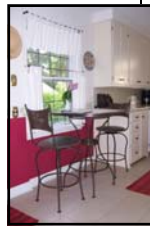
100 E. Wilson Bridge Rd. Worthington, OH 43085  
614.888.6100  
www.TheColumbusTeam.com  
homes@TheColumbusTeam.com  
www.facebook.com/TheColumbusTeam

We Know Columbus!

## DETAILS



- 2 Story w/ Wood Shingle Exterior (freshly painted exterior)
- 1 - Car detached garage w/ opener
- Three Bedrooms
- One Full Bath
- Eat in Kitchen
- Hardwood Floors
- Leaded Glass Windows with storms
- Gas Log Fireplace
- Screened Porch
- Paver Patio
- Lush Perennial Garden
- Recreation Room
- Glass Block Windows
- Washer/ Dryer Conveys
- Forced Air Gas Furnace— '05
- Central Air
- Year Built - 1938
- Square Ft. - 1,374
- Lot Size - 45' x 143'
- Taxes - \$3,568/ yr.
- Parcel #010-086755-00
- Columbus Schools
- ABC Home Safe and Gas Line Warranty
- Disclosures are available on the MLS
- Proximity to Olentangy multi-use trail, farmers market, cafés, dining and amenities!



**243 W. Schreyer Place**

The information in this brochure is deemed reliable, but is not guaranteed.

## ROOM DESCRIPTION



243 W. Schreyer Pl.

### Schools

[www.columbus.k12.oh.us/](http://www.columbus.k12.oh.us/)

#### High School

Whetstone High School  
4405 Scenic Dr.  
Columbus, Ohio 43214  
614-365-6060

#### Middle School

Dominion Middle School  
330 E. Dominion Blvd.  
Columbus, Ohio 43214  
614-365-6020

#### Elementary School

Indian Springs Elementary School  
50 E. Henderson Rd.  
Columbus, Ohio 43214  
614-365-6032

#### Parochial High Schools

Bishop Watterson High School  
St. Charles Preparatory High School

#### Foyer/Vestibule

Hardwood floor, archway leading to living room, coat closet, overhead light

#### Living Room

12'7" x 22'0"

Hardwood floor, painted woodwork, natural wood crown molding, gas log fireplace, natural wood mantel w/ marble surround & hearth, leaded glass French doors leading to screened porch, curtains on windows

#### Dining Room

12'3" x 12'8"

Hardwood floor, painted woodwork, painted crown molding, chair rail, built-in telephone shelf, leaded glass picture windows overlooking the front yard, chandelier, sheers on windows

#### Kitchen

Ceramic tile floor ('06), Corian countertop & backsplash, painted cabinets with Updated hardware ('06), single porcelain sink w/ garbage disposal, Kenmore flat top stove, built in microwave oven ('09) above stove, Kenmore dishwasher, Kenmore side by side refrigerator, track lighting ('06)

#### Eat in Space

Ceramic tile floor, door leading to screened in porch (new back door)

#### Master Bedroom

12'8" x 22'0"

Hardwood floor, painted woodwork, ceiling fan, 2" plantation blinds on windows, closet

#### Bedroom #2

9'5" x 10'9"

Hardwood floor, painted woodwork, ceiling fan, 2" plantation blinds on Windows, closet

#### Bedroom #3

10'9" x 12'9"

Hardwood floor, painted woodwork, overhead light, plantation blinds on windows, closet

#### Full Bath

Linoleum floor, painted woodwork, wainscoting, pedestal sink, built in medicine cabinet, sconce lights, porcelain tub, shower surround, commode

#### Hall

Hardwood floor, built in linen storage, overhead light

#### Basement

Recreation room, washer/ dryer hook-up, new utility sink, painted floor, glass block windows, storage closet

