

TheColumbusTeam

WELCOME!



404 Richards Rd.


KELLER WILLIAMS
CAPITAL PARTNERS
R E A L T Y

	<p>WE KNOW COLUMBUS. WE KNOW CENTRAL OHIO. www.TheColumbusTeam.com</p>			
<p>Sue Lusk-Gleich & TheColumbusTeam</p>				
<p>614.888.6100 Keller Williams Capital Partners Realty</p>				

Sue Lusk-Gleich, Mary Allen, Patrick Florence,
Erin Ogden, Edie James and Jeanne O'Keefe

100 E. Wilson Bridge Rd. Worthington, OH 43085

614.888.6100

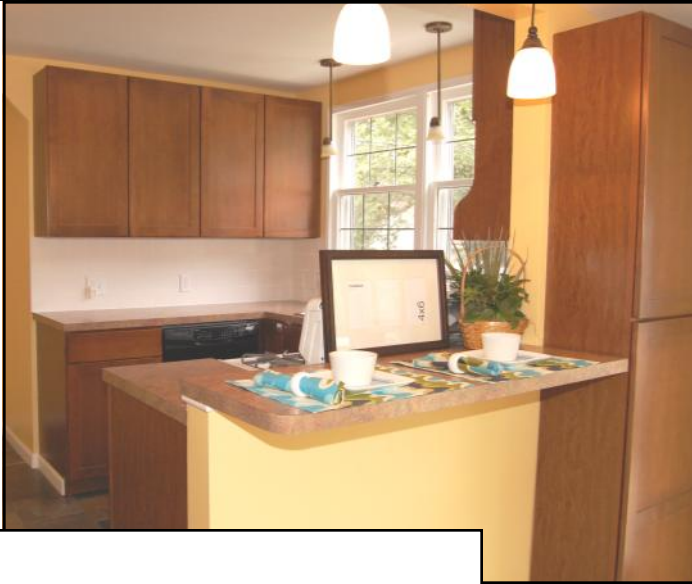
www.TheColumbusTeam.com

homes@TheColumbusTeam.com

www.facebook.com/TheColumbusTeam

We Know Columbus!

DETAILS



- Cape Cod w/ Aluminum Exterior
- 1 Car Detached Garage
- Three Bedrooms
- One Full Bath- remodeled '07
- Updated Kitchen - '08
- Refinished Hardwood Floors - '10
- Eat- in Kitchen Addition - '08
- Wood Burning Fireplace w/gas starter (cleaned '09)
- Chimney cap - '05
- New Roof - '09
- Lead Glass Windows
- Some Replacement Windows
- Glass block basement window - '04
- Hot Water Tank - '07
- Updated Electric Panel - '07
- High Efficiency Furnace
- Central Air
- Year Built - 1941
- Square Ft.—1,299
- Lot Size—50 x 130
- Taxes—\$3,121/ yr.
- Parcel # 010-071391-00
- Columbus Schools
- ABC Homesafe & Gas Line Warranty



404 Richards Road

The information in this brochure is deemed reliable, but is not guaranteed.

ROOM DESCRIPTION



Living Room

11'9 x 19'6

Hardwood floor, painted woodwork, crown molding, wood burning fireplace w/gas starter, ceramic tile hearth, glass fireplace enclosure, built-in shelving, recessed lighting, leaded glass windows

Dining Room

9'6 x 12'6

Hardwood floor, painted woodwork, crown molding, (2) built-in corner china cabinets, overhead light, leaded glass windows



Kitchen (Updated -2008)

Slate tile floor, painted woodwork, maple wood cabinetry, Formica countertop, stainless steel sink, garbage disposal, ceramic tile backsplash, (2) pendant lights over sink, GE gas stove, Whirlpool dishwasher, built-in microwave shelf, pantry, overhead light

Kitchen Eat-in Area - (2008 Addition)

8'6 x 9'6

Slate tile floor, vaulted ceiling, sliding glass door leading to outdoor patio, breakfast bar, (2) pendant lights above bar, pantry cabinet, overhead light/fan

404 Richards Road

Schools

www.columbus.k12.oh.us/

High School

Whetstone High School
4405 Scenic Dr.
Columbus, Ohio 43214
614-365-6060

Middle School

Dominion Middle School
330 E. Dominion Blvd.
Columbus, Ohio 43214
614-365-6020

Elementary School

Indian Springs Elementary School
50 E. Henderson Rd.
Columbus, Ohio 43214
614-365-6032

Parochial High Schools

Bishop Watterson High School
St. Charles Preparatory High School

Bedroom #1

11'4 x 12'8

Hardwood floor, painted woodwork, large closet, overhead light, leaded glass windows, mini-blinds on windows

Bedroom #2

10'11 x 13'2

Hardwood floor, painted woodwork, closet, recessed lighting, overhead light, mini-blind on windows

Hall

Hardwood floor, coat closet, built-in linen storage cabinet / drawers, overhead light

Full Bath

Laminate floor, vintage ceramic tile on wall, vanity w/ porcelain sink and Formica countertop, mirror/medicine cabinet, sconce lights, porcelain tub w/ surround, shower curtain, built-in storage cabinet, commode

Bedroom #3

12'0 x 20'

Hardwood floor, knotty pine paneled walls, built-in shelving, multiple Closets overhead lighting, multiple storage spaces,

Basement

Painted floor, glass block windows, recessed lighting throughout, potential recreation room, washer/dryer hook-up, utility sink

SURVEY

