

# TheColumbusTeam

# WELCOME!



## 5901 Lower Bremo Lane



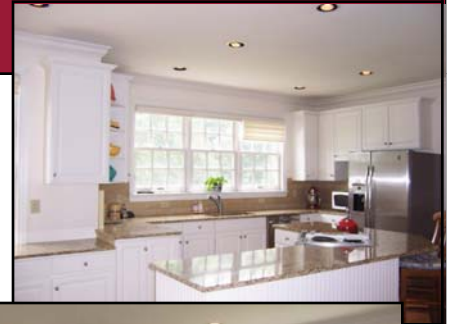
Sue Lusk-Gleich, Mary Allen, Patrick Florence,  
Erin Ogden, Edie James and Jeanne O'Keefe

100 E. Wilson Bridge Rd. Worthington, OH 43085  
614.888.6100

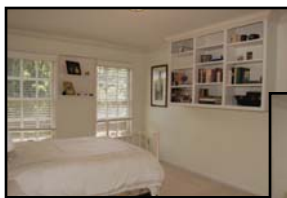
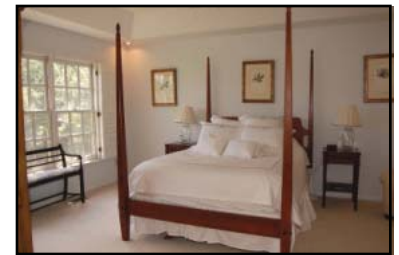
www.**TheColumbusTeam**.com  
homes@**TheColumbusTeam**.com  
www.facebook.com/**TheColumbusTeam**

# We Know Columbus!

## DETAILS



- **Two Story Georgian Colonial with Brick Exterior**
- **2 Car Attached Garage w/Openers**
- **Four Bedrooms**
- **Three Full and One Half Baths**
- **Gas Log Fireplace**
- **Finished Lower Level - With Wet Bar and Bedroom/Office and Full Bath**
- **FA Gas Furnace -'07**
- **Central Air- '07**
- **Brick Patio with iron railing**
- **HOA: \$520.90 per year ~ maintains all common green areas and light poles for each residence**
- **Year Built - 1994**
- **Square Ft. - 3,138**
- **Lot Size - 100' x 190'**
- **Taxes - \$15,366.18/ yr.**
- **Parcel # 222-001128-00**
- **New Albany Plain Local Schools**
- **ABC Home Safe and Gas Line Warranty**
- **Disclosures are available on the MLS**



**5901 Lower Bremo Lane**

The information in this brochure is deemed reliable,  
but is not guaranteed.

## ROOM DESCRIPTION



**5901 Lower Bremo Lane**

### **New Albany Resources**

\*\*\*\*\*

**New Albany Arts Council**  
[www.naarts.org](http://www.naarts.org)

**New Albany Chamber of  
Commerce**  
[www.newalbanychamber.com](http://www.newalbanychamber.com)

**New Albany Community Events**  
[www.newalbanycommunityevents.com](http://www.newalbanycommunityevents.com)

**New Albany Plain Local Schools**  
[www.new-albany.k12.oh.us/](http://www.new-albany.k12.oh.us/)

**New Albany Country Club**  
[www.nacc.com/](http://www.nacc.com/)

**New Albany Parks Dept.**  
[www.naparks.org/](http://www.naparks.org/)

### **Entrance Foyer**

Hardwood floors, crown molding and two coat closets

### **Living Room**

**11'4" x 15'6"**

Carpet, crown molding, chandelier, French doors leading to family room and plantation shutters on windows

### **Dining Room**

**11'3" x 15'5"**

Hardwood floors, crown molding, tray ceiling, chair rail and plantation shutters on windows

### **Kitchen**

Hardwood floors, crown molding, white cabinets, double stainless steel sink with garbage disposal, granite countertop, ceramic tile back splash, GE stainless steel side by side refrigerator with dispenser, GE stainless steel dishwasher, Jenn Air electric range, Emerson stainless steel microwave, island with seating area, walk in pantry, built in desk unit, can lights, roll shades on windows and access to attached garage

### **Breakfast Room**

**11'3" x 15'8"**

Hardwood floors, crown molding, wet bar with cabinets, plantation shutters on windows and French doors leading to family room

### **First Floor Utility Room**

Ceramic tile floor, utility sink, cabinets and built in ironing board

### **Half Bath**

Hardwood floors, crown molding, pedestal sink and commode

### **Family Room**

**17'9" x 21'5"**

Carpet, tray ceiling, can lights, ceiling fan, gas log fireplace, built in shelves, can lights, plantation shutters on windows and French doors leading to brick patio



## ROOM DESCRIPTION



**5901 Lower Bremo Lane**

### Schools

#### High School

New Albany High School  
7600 Fodor Road  
New Albany, Ohio 43054  
614-413-8300

#### Middle School

New Albany Middle School  
6600 Dublin-Granville Road  
New Albany, Ohio 43054  
614-413-8500

#### Elementary School

New Albany Elementary K-1  
5101 Swickard Woods Blvd.  
New Albany, Ohio 43054  
614-413-8700

New Albany Elementary 2-5  
87 N. High Street  
New Albany, Ohio 43054  
614-413-8600

#### Parochial High Schools

St. Francis DeSales High School  
St. Charles Preparatory High School

#### Master Bedroom

**13'3" x 17'3"**

Carpet, tray ceiling, ceiling fan, can lights and plantation shutters on windows

#### Master Bath

Ceramic tile floor, crown molding, can lights, double sink vanity, whirlpool tub, shower with ceramic tile surround and glass doors, water closet, walk in closet with built ins and attic access and pleated shades on windows

#### Bedroom

**11'3" x 13'3"**

Carpet, crown molding, chair rail, double closet and plantation blinds on windows

#### Bedroom

**11'3" x 13'2"**

Carpet, crown molding, double closet and plantation blinds on windows

#### Bedroom

**10'7" x 13'11"**

Carpet, crown molding, built in wall shelves, double closet and plantation blinds on windows

#### Hall

Linen cupboard

#### Full Bath

Ceramic tile floor, two vanities, tub/shower with ceramic tile surround, commode and plantation blinds on window

#### Finished Lower Level

#### Rec Room

**25' x 25'**

Carpet, hardwood floors, ceramic tile, can lights, built in shelves, wet bar with cabinets and wine rack

#### Bedroom/Office

**13' x 14'3"**

Carpet, can lights, double closet with built ins and storage closet

#### Full Bath

Ceramic tile floor, vanity, tub/shower, commode and corner cabinet

**Storage Rooms** - Mechanicals and access to crawl space

## Plat Map

