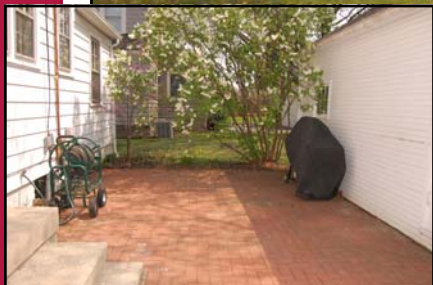


TheColumbusTeam

# WELCOME!



## 65 Sheffield Rd.



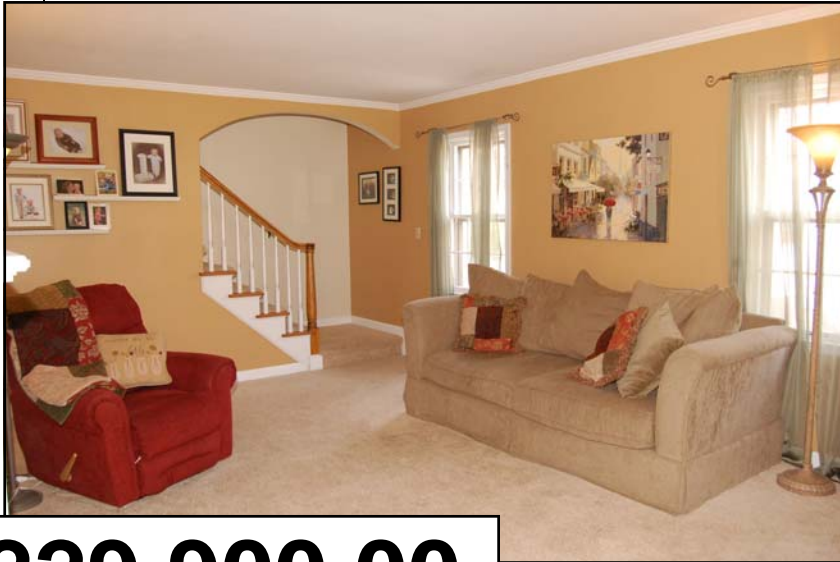
Sue Lusk-Gleich, Mary Allen, Patrick Florence,  
Erin Ogden, Edie James and Jeanne O'Keefe

100 E. Wilson Bridge Rd. Worthington, OH 43085  
614.888.6100

[www.TheColumbusTeam.com](http://www.TheColumbusTeam.com)  
[homes@TheColumbusTeam.com](mailto:homes@TheColumbusTeam.com)  
[www.facebook.com/TheColumbusTeam](http://www.facebook.com/TheColumbusTeam)

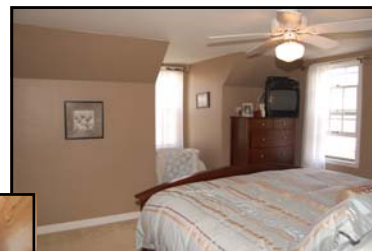
# We Know Columbus!

## DETAILS



**\$229,900.00**

- Cape Cod w/Aluminum Exterior
- Two Car Detached Garage with storage room and door Openers
- New roof on Garage
- Three Bedrooms
- One & Half Baths –both baths updated
- FA Gas Furnace
- Central Air - '01
- Hot Water Tank - '08
- Two Wood Burning Fireplaces
- Renovated Kitchen w/granite counters and maple cabinetry
- Refinished hard wood floors
- New carpet in the living room
- Screened Porch
- Brick Patio
- Landscaped yard
- Finished Basement (with wood burning fireplace)
- Parcel # - 010-086335
- Year Built - 1940
- Square Ft. - 1,431
- Lot Size - 50 x 155
- Taxes - \$3,827.84/yr.
- Columbus Schools
- ABC Home Safe and Gas Line Warranty
- Disclosures are on MLS



**65 Sheffield Road**

The information in this brochure is deemed reliable, but is not guaranteed.

## ROOM DESCRIPTION



**65 Sheffield Road**

### Schools

[www.columbus.k12.oh.us](http://www.columbus.k12.oh.us)

#### High School

Whetstone High School  
4405 Scenic Drive  
Columbus, Ohio 43214  
614-365-6060

#### Middle School

Dominion Middle School  
330 E. Dominion Blvd.  
Columbus, Ohio 43214  
614-365-6020

#### Elementary School

Indian Springs Elementary School  
50 E. Henderson Road  
Columbus, Ohio 43214  
614-365-6032

#### Private

Bishop Watterson High School  
St. Charles Preparatory High School

#### Entrance Foyer

Ceramic tile floor and coat closet

#### Living Room

**12'4" x 19'8"**

Carpet ('08), crown molding, wood burning fireplace and curtains on windows

#### Dining Room

**11' x 12'10"**

Hardwood floor, crown molding, chair rail, built in corner cabinet, chandelier, access to screened porch and curtains on window

#### Kitchen

Laminate floor ('05), new double stainless steel sink with garbage disposal, new granite tile countertops, new maple cabinetry, new ceramic tile backsplash, built-in microwave, Samsung refrigerator ('04), Whirlpool smooth top range, GE dishwasher

#### Bedroom (First Floor)

**8'6" x 14'1"**

Carpet, closet, wall niche, mini blinds and curtains on windows

#### Half Bath

Laminate floor, crown molding, vanity, commode and valance on window

#### Bedroom (Second Floor)

**13' x 14'**

Carpet, ceiling fan with light, three closets (one cedar) and sheers on windows

#### Bedroom (Second Floor)

**11'5" x 17'5"**

Carpet, ceiling fan with light, built in shelves, large closet with storage and mini blinds on windows

#### Full Bath

Ceramic tile floor, vanity, medicine cabinet, wall cabinet, Jacuzzi tub, commode, linen cupboard and roman shades on window

#### Basement

#### Rec Room

**11'6" x 22'4"**

Carpet, wood burning fireplace and shutters on windows

#### Utility Room

Washer/dryer hook up and utility sink