

TheColumbusTeam

WELCOME!



225 Tibet Rd.


KELLER WILLIAMS
CAPITAL PARTNERS
R E A L T Y

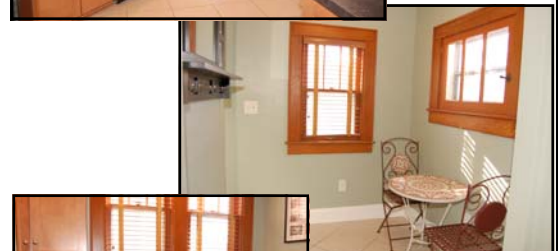
	WE KNOW COLUMBUS. WE KNOW CENTRAL OHIO. www.TheColumbusTeam.com				
Sue Lusk-Gleich & TheColumbusTeam					
614.888.6100 Keller Williams Capital Partners Realty					
					

Sue Lusk-Gleich, Mary Allen, Patrick Florence,
Erin Ogden, Edie James and Jeanne O'Keefe

100 E. Wilson Bridge Rd. Worthington, OH 43085
614.888.6100
www.TheColumbusTeam.com
homes@TheColumbusTeam.com
www.facebook.com/TheColumbusTeam

We Know Columbus!

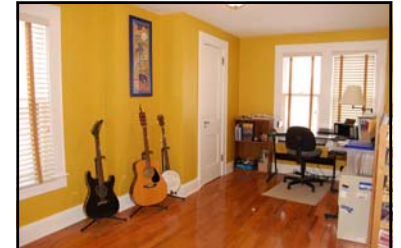
DETAILS



\$224,900.00

- Two Story w/Vinyl Exterior
- Two Car Detached Garage w/Openers
- Three Bedrooms
- One and Half Baths
- FA Gas Furnace
- Central Air
- Gas Log Fireplace
- Roof - '06
- Sump Pump
- Glass Block Windows
- Gutters & downspouts - '09
- All New Window Treatment - '08
- Washer & Dryer convey
- Parcel # - 010-039865
- Year Built - 1922
- Square Ft. - 1,509
- Lot Size - 50 x 112
- Taxes - \$3,446/Yr.
- Columbus Schools
- ABC Home Safe & Gas Line Warranty
- Disclosures are on MLS

*Proximity to OSU, Olentangy Trail & Parks,
Public Transportation & amenities*



225 Tibet Road

The information in this brochure is deemed reliable, but is not guaranteed.

ROOM DESCRIPTION



225 Tibet Road

Schools

www.columbus.k12.oh.us

High School

Whetstone High School
4405 Scenic Road
Columbus, Ohio 43214
614-365-6060

Middle School

Dominion Middle School
330 E. Dominion Blvd.
Columbus, Ohio 43214
614-365-6020

Elementary School

Clinton Elementary School
10 Clinton Heights
Columbus, Ohio 43202
614-365-6532

Parochial High Schools

Bishop Watterson High School
St. Charles Preparatory High School

Living Room

11'10" x 18'

Wood Floor, natural woodwork, crown molding, built in book cases flanking gas log fireplace and curtains on windows

Dining Room

12'8" x 16'6"

Wood floor, natural woodwork, coat closet, French doors, plantation blinds and curtains on windows

Kitchen with Eating Area

Ceramic tile floor, double stainless steel sink with garbage disposal, ceramic tile back splash, stainless steel Kitchen Aid smooth top range, microwave, dishwasher and refrigerator, can lights and plantation blinds on windows

Half Bath

Ceramic tile floor, pedestal sink and commode

Bedroom

9'4" x 13'11"

Wood floor, natural woodwork, closet with organizer (container store organizer '08) and curtains on windows

Bedroom

9'7" x 14'4"

Wood floor, closet with organizer (container store organizer '08) and curtains on windows

Bedroom

9'6" x 14'11"

Wood floor, closet and plantation blinds on windows

Hall

Linen cupboard and attic access

Full Bath

Ceramic tile floor, double vanity, double medicine cabinets, tub/shower with ceramic tile surround, commode and plantation blinds on window

Basement

Washer/dryer hook up, utility sink and glass block windows (washer and dryer convey with the home)