

# TheColumbusTeam

# WELCOME!



## 510 Acton Rd.

  
**KELLER WILLIAMS**  
**CAPITAL PARTNERS**  
R E A L T Y

	<p>WE KNOW COLUMBUS. WE KNOW CENTRAL OHIO. <a href="http://www.TheColumbusTeam.com">www.TheColumbusTeam.com</a></p>			
<p>Sue Lusk-Gleich &amp; TheColumbusTeam</p>				
<p>614.888.6100 Keller Williams Capital Partners Realty</p>				

Sue Lusk-Gleich, Mary Allen, Patrick Florence,  
Erin Ogden, Edie James and Jeanne O'Keefe

100 E. Wilson Bridge Rd. Worthington, OH 43085  
614.888.6100  
[www.TheColumbusTeam.com](http://www.TheColumbusTeam.com)  
[homes@TheColumbusTeam.com](mailto:homes@TheColumbusTeam.com)  
[www.facebook.com/TheColumbusTeam](http://www.facebook.com/TheColumbusTeam)

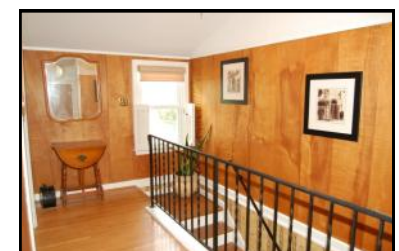
## We Know Columbus!

## DETAILS



**\$239,900.00**

- Cape Cod w/Stone, aluminum and vinyl exterior
- 1 Car Attached Garage with side load and Carport
- Four Bedrooms (2 up/ 2 down)
- Two Full Baths (plus half in basement utility room)
- Roof -'01
- FA Gas Furnace -December '99
- Central Air -'05
- Hot Water Tank -'09
- Windows -'06
- Gas Log Fireplace
- Screened Porch
- Patio
- Parcel # - 010-087328
- Year Built - 1949
- Square Ft. - 1,949
- Lot Size - 65 X 130
- Taxes - \$4,078.56yr.
- Columbus Schools
- ABC Home Safe Warranty
- Clintonville Street Light Assessment to be assumed by buyer
- Disclosures are attached to MLS report



**510 Acton Road**

The information in this brochure is deemed reliable, but is not guaranteed.

## ROOM DESCRIPTION



### 510 Acton Road

#### Schools

[www.columbus.k12.oh.us](http://www.columbus.k12.oh.us)

#### High School

Whetstone High School  
4405 Scenic Dr.  
Columbus, Ohio 43214  
614-365-6060

#### Middle School

Dominion Middle School  
330 E. Dominion Blvd.  
Columbus, Ohio 43214  
614-365-6020

#### Elementary School

Indian Springs Elementary School  
50 E. Henderson Rd.  
Columbus, Ohio 43214  
614-365-6032

#### Parochial High Schools

Bishop Watterson High School  
St. Charles Preparatory High School

#### Entrance Foyer

Ceramic and hardwood floor and coat closets (2)

#### Living Room

14'3" x 19'6"

Hardwood floor, gas log fireplace and mini blinds on bay window

#### Dining Room

10'5" x 10'6"

Hardwood floor, chair rail, two built in corner cabinets, chandelier and mini blinds on window

#### Kitchen with Eating Area

Ceramic tile floor, single sink with ceramic tile back splash, Bosch dishwasher, Maytag gas range, Whirlpool microwave, Whirlpool side by side refrigerator with dispenser, pantry and mini blinds on windows

#### Bedroom (First Floor)

9'11" x 13'6"

Hardwood floor, crown molding, ceiling fan with light, double closet and shutters on windows

#### Bedroom (First Floor)

9'7" x 14'4"

Carpet, ceiling fan with light, closet and shutters on windows

#### Full Bath (First Floor)

Ceramic tile floor, vanity, medicine cabinet, tub/shower with ceramic tile surround, commode, linen cupboard and pleated shades on windows

#### Bedroom (Second Floor)

17'9" x 18'10"

Hardwood floor, closet, built in shelves, attic access and mini blinds on windows

#### Bedroom (Second Floor)

17'11" x 27'7"

Hardwood floor, closet and roman shades on windows

#### Full Bath (Second Floor)

Ceramic tile floor, vanity, shower, linen cupboard, can lights and pleated shade on window

#### Hall

Attic fan and storage closet

#### Basement

##### Rec Room

17'6" x 23'

Room - Carpet, paneling and built in shelves

12'9" x 13'

Utility Room - Washer/dryer hook up, utility sink and half bath

Storage Room - Built in shelves